

1

2

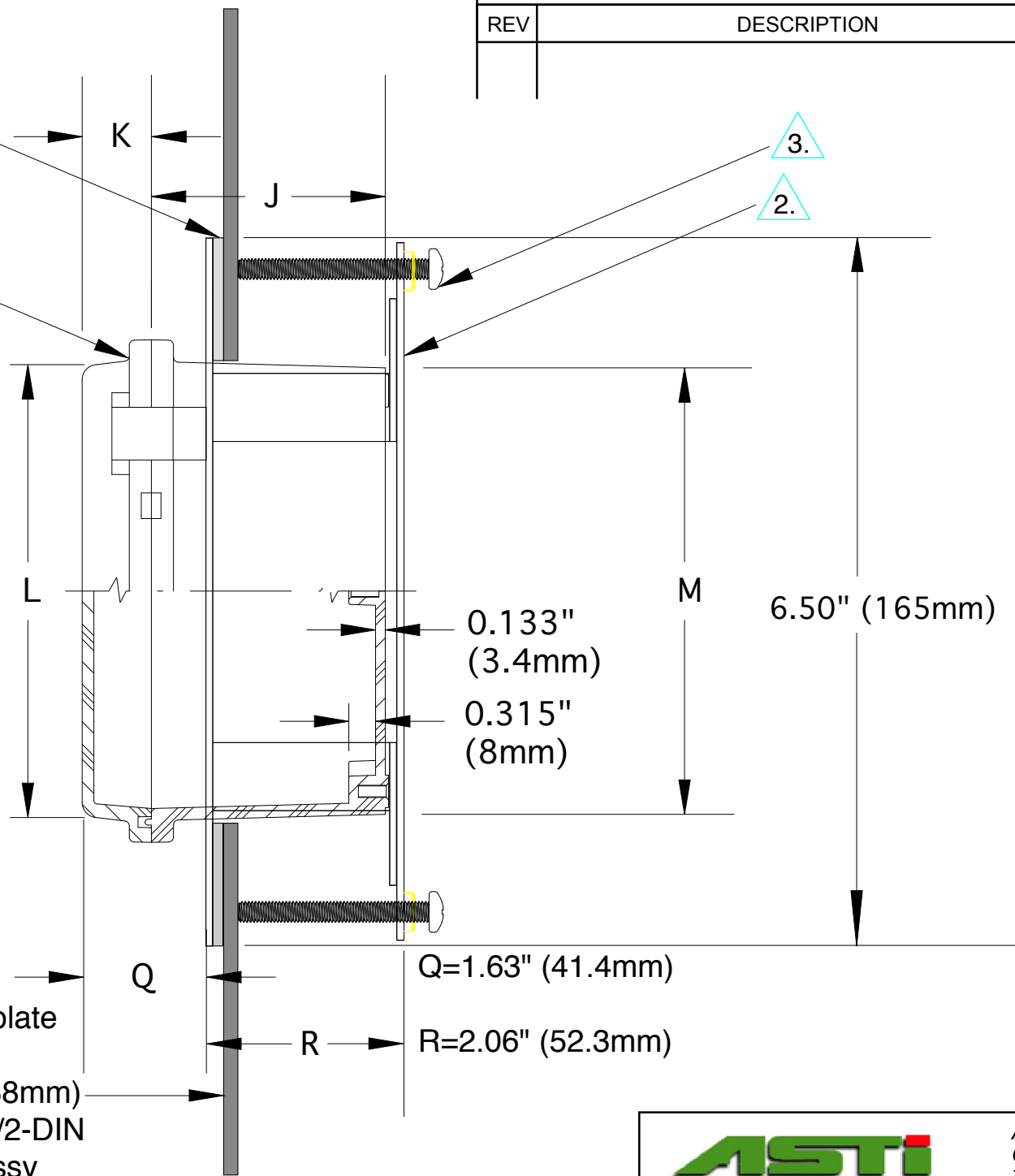
3

REVISION HISTORY

REV	DESCRIPTION	DATE	APPROVED

Sealing EPR Gasket
 0.093" (2.36mm) Thick
 0.500" (12.7mm) Wide

1.



J=2.753" (70mm)

K=0.815" (21mm)

L=5.330" (135mm)

M=5.255" (133mm)

6.50" (165mm)

0.133" (3.4mm)

0.315" (8mm)

Q=1.63" (41.4mm)

R=2.06" (52.3mm)

Panel Faceplate
 5.40"X5.40"
 (138mmX138mm)
 Cutout for 1/2-DIN
 3TX-3MP Assy

NOTES.

- 1. NEMA 4X, UL Listed Enclosure, ABS/PC plastic for Body, Polycarbonate plastic for clear door cover
 UL94-5VB for Body & UL94V-0 for Door Flammability Rating, UV Stabilized with Polyurethane Internal Gaskets
- 2. Panel Bracket Assembly, Material of Construction 16 Gauge Steel, Power Coated, 316SS Optional
- 3. #10-32 X 2" Panhead Phillips Screw (2.5" Optional), 4 places, 90 degrees apart (see subsequent drawings)
- 4. 1/2" MNPT sealing cable glands along with mating tapped and threaded holes not shown on drawing, 3 each on top and 3 each on bottom standard
- 5. NEMA 4X Enclosure & Panel Mounting Bracket are bound together with suitable silicone sealant for a fully waterproof 1/2-DIN panel mount enclosure assembly as shipped, ready for installation complete



Advanced Sensor Technologies, Inc.
 Orange, California USA
 Toll-Free: 888-969-2784

TOLERANCES	
1 Place: ± .1	3 Places: ± .005
2 Places: ± .01	4 Places: ± .0005
Angular: ± 0.25°	

DRAWN BY TADP
CHECKED BY MJP
APPROVED BY MJP

TITLE 3MP 1/2-DIN PANEL MOUNT ASSY SIDE VIEW			
SIZE B	PROJECT 3MP	DRAWING NO. 3MP - VIEW 1	REV /
SCALE Not to Scale	MODEL 3MP	SHEET 1	OF 1

1

2

3

A

A

B

B

1

2

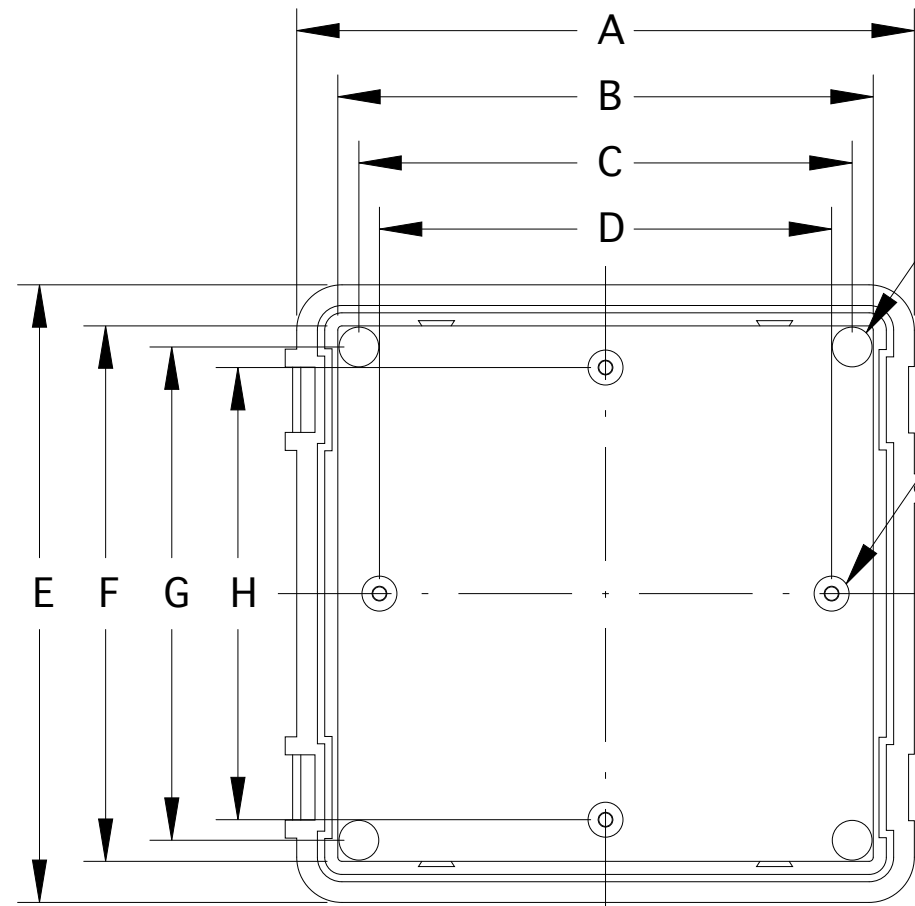
3

REVISION HISTORY

REV	DESCRIPTION	DATE	APPROVED

A,E=5.904" (150mm), B,F=5.040" (128mm), C,G=4.715" (120mm), D,H=4.322" (110mm)

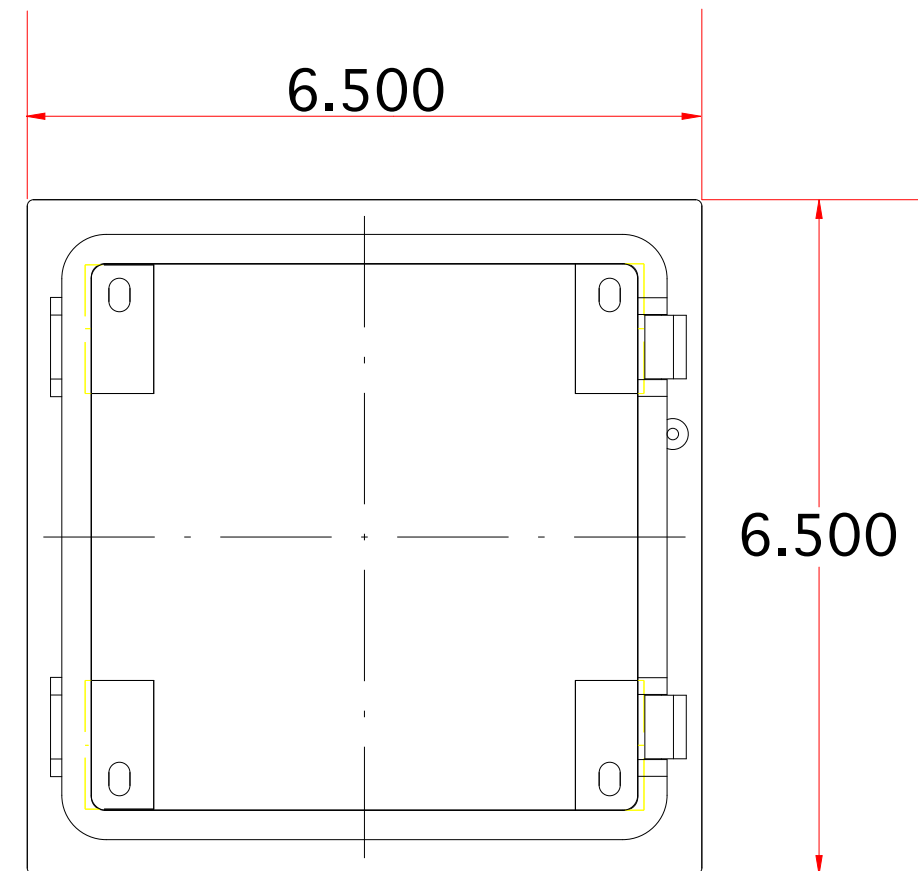
A



0.380 [10] DIA. BOSS
WITH M4 x 0.7mm
THREADED BRASS INSERT
(4) PLACES - TO BOLT ON
1/2-DIN PANEL BRACKET

0.334 [8] DIA. BOSS
WITH M4 x 0.7mm
THREADED BRASS INSERT
(4) PLACES - FOR 35mm
DIN-RAIL TO HOLD 3TX
TRANSMITTER MODULES

VIEW LESS COVER



A

B

B

NOTE: CUTOUT FOR 1/2-DIN 3MP PANEL MOUNTING ENCLSOURE
ASSEMBLY IS STANDARD 5.40" X 5.40" (138mm X 138mm)



Advanced Sensor Technologies, Inc.
Orange, California USA
Toll-Free: 888-969-2784

TOLERANCES	
1 Place: ± .1	3 Places: ± .005
2 Places: ± .01	4 Places: ± .0005
Angular: ± 0.25°	

DRAWN BY

TADP

CHECKED BY

MJP

APPROVED BY

MJP

TITLE

3MP 1/2-DIN Panel Mount for 3TX - FRONT

SIZE

B

PROJECT

3MP

DRAWING NO.

3MP - VIEW 2

REV

/

SCALE Not to Scale

MODEL 3MP

SHEET 1 OF 1

1

2

3

1

2

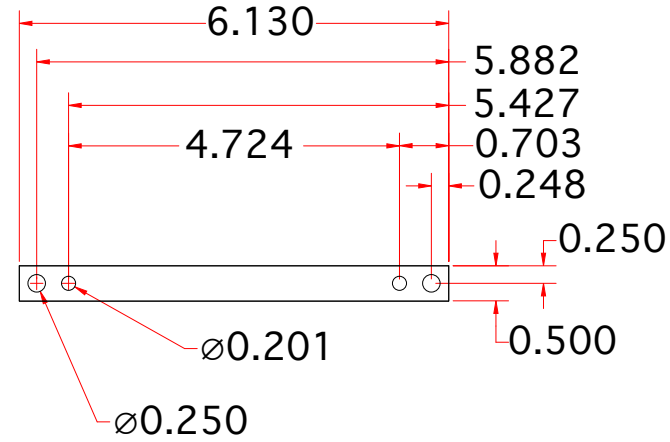
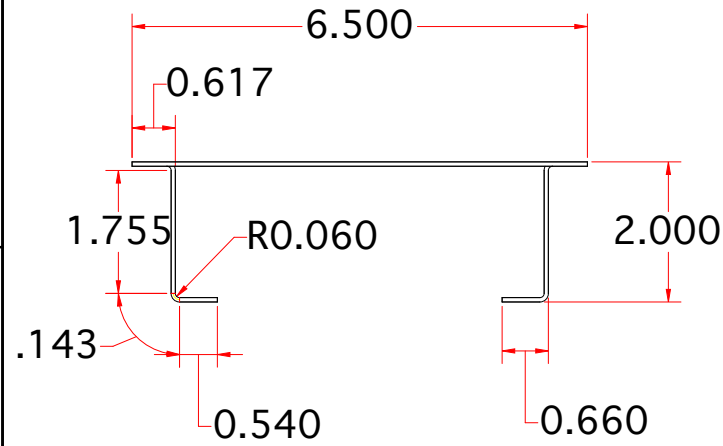
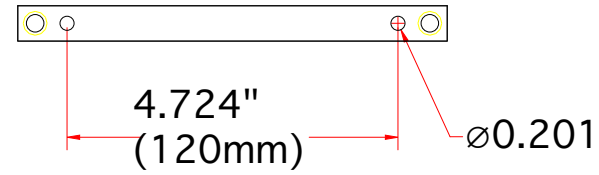
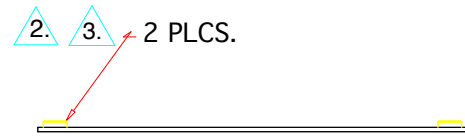
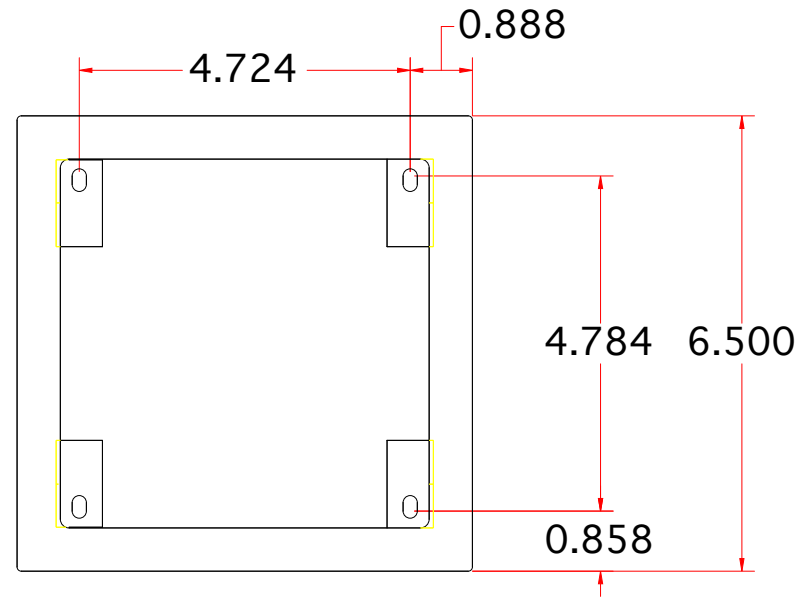
3

REVISION HISTORY

REV	DESCRIPTION	DATE	APPROVED

A

A



FLAT PATTERN

TO BOTTOM OF 3MP BOX

TO BOTTOM OF 3MP BOX

TO BOTTOM OF 3MP BOX

2.

3.

TO BOTTOM OF MOUNTING PANEL 4 PLCS.

TO BOTTOM OF 3MP BOX 4 PLCS.

TO BOTTOM OF MOUNTING PANEL 4 PLCS.

TO BOTTOM OF MOUNTING PANEL 4 PLCS.

B

B

NOTES.

1. STEEL, 16 GAUGE, POWDER COATED, 316SS OPTIONAL

2. #10-32 CAPTIVE NUT

3. #10-32 x 2" PANHEAD PHILIPS

TOLERANCES	
1 Place: $\pm .1$	3 Places: $\pm .005$
2 Places: $\pm .01$	4 Places: $\pm .0005$
Angular: $\pm 0.25^\circ$	

DRAWN BY

TADP

CHECKED BY

MJP

APPROVED BY

MJP



Advanced Sensor Technologies, Inc.
Orange, California USA
Toll-Free: 888-969-2784

TITLE
3MP - BRACKET ASSEMBLY DETAIL

SIZE	PROJECT	DRAWING NO.	REV
B	3MP	3MP - VIEW 3	/

SCALE Not to Scale MODEL 3MP SHEET 1 OF 1

1

2

3